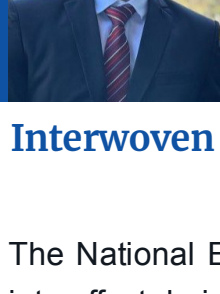


# KREA COMPASS

Educate. Empower. Evolve.



**Message from Arpit Solanki**  
*Director, Admissions and Outreach, Krea University*

## Interwoven Learning pedagogy: Aligning with NEP 2020 for a transformative educational experience

The National Education Policy (NEP) of 2020, implemented by the Central government, came into effect during the 2023-2024 academic year. This policy has introduced significant changes, from syllabus updates to structural reforms, marking a potential turning point in how education is delivered and perceived across the country.

One of the central goals of the NEP is to foster critical thinking among students, moving away from traditional rote learning methods. The policy advocates for a holistic, inquiry-based approach to education, where students engage in experiential learning, multidisciplinary studies, interactive pedagogy, and more.

Even ahead of NEP, Krea University's educational philosophy was already aligned with these transformative goals. Our unique approach, known as Interwoven Learning, naturally integrates many of the principles highlighted by the policy. This pedagogy encourages students to explore the interconnectedness of knowledge across the Arts, Sciences, and Humanities. From their first year through to their final capstone thesis, students at Krea engage in a multidirectional refinement of wisdom and understanding.

Our programmes are designed to be writing-intensive, interdisciplinary, and research-focused. They emphasise ethics, the historicity of concepts, data analytics, and the impact of rapidly evolving technologies. Krea students learn to critically engage with various disciplines, question established knowledge, and explore their relevance in today's world.

Through this, they develop the skills to adapt to fast-changing environments, becoming flexible and thoughtful leaders who can navigate the complexities of modern life with confidence and humility.

## Students in Spotlight

*Our students consistently strive for excellence in both academics and extracurricular activities. We are proud to share some of their recent accomplishments with you.*

### Journal for an Impact

The first peer-reviewed journal of Krea University — Journal of Interwoven Arts and Sciences — is here! It's helmed by Dipti Wadhwa, an alum of Pathashaala KFI, Kanchipuram and Nirva Shah, an alum of Jai Hind Junior College, Mumbai. The purpose of this student-run journal is to provide a platform for SIAS undergraduate students to submit their academic work.

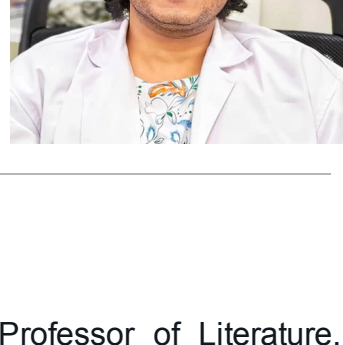
[View more](#)

## Faculty Showcase

*From impactful research publications to delivering guest lectures at prestigious conferences, our faculty members are actively contributing to the educational landscape.*

### News Article

Sayantan Datta, Assistant Professor of Practice, Krea-CWP (Centre for Writing and Pedagogy), has authored an article titled *Earthquake 2,500 years ago abruptly changed Ganga river's course for The Hindu*. The story explores how scientists discovered that an ancient earthquake had moved the mighty Ganges.



[Read more](#)

### Opinion Piece

Dr Sayandeb Chowdhury, Senior Assistant Professor of Literature, SIAS, Krea University has authored an article titled *Mamata's Handling of the R.G. Kar Hospital Case Could Prove to Be Her Hour of Reckoning for The Wire*.

[Read more](#)

## Career Chronicles

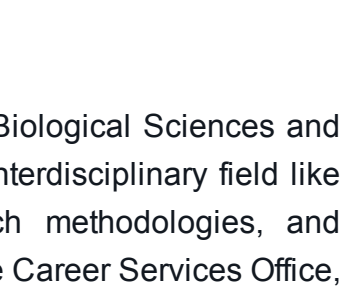
*We take pride showcasing the success stories of our Kreators and documenting them to inspire others*

### Guiding Students to Success: Insights from Varunavi

Pursuing - MSc Human Cognitive Neuropsychology, University of Edinburgh

Alum - Krea University, Major - Psychology, Concentration - Biological Sciences

Alum - Sri Vidhya Academy International School, Tamil Nadu



### Learning Curve

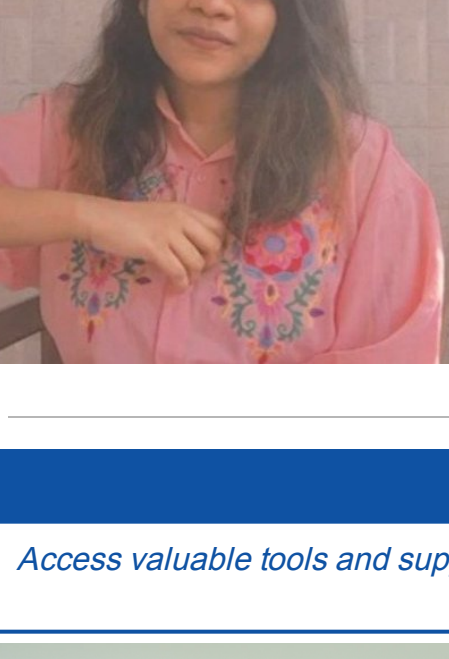
"Krea encouraged me to explore disciplines beyond Psychology, like Biological Sciences and Philosophy. This broadened my foundation, which was crucial for an interdisciplinary field like Cognitive Neuropsychology. Courses in academic writing, research methodologies, and neuroscience, along with support from professors and internships via the Career Services Office, helped me tailor my path toward a master's degree and a career in research."

### Inputs and Insights

"It's okay to feel unsure about your path—I certainly did. If something piques your curiosity, explore it. Whether it's reading, online courses, or connecting with professionals, these steps can clarify what you enjoy and where your strengths lie. Don't limit yourself to your major; some of my best discoveries came from venturing beyond it. And if your program requires tests like IELTS or GRE, take them a year before your final year to ease the application process."

## Alma Matters

*We take pride showcasing the success stories of our Kreators and documenting them to inspire others*



We recently had the pleasure of reconnecting with Chaarmikha Nagalla, an alum from the Cohort of 2023, SIAS, Krea University and Meridian School, Madhapur. Chaarmikha was on campus for a discussion titled Life After Krea where she shared nuggets of her wisdom with the incoming cohort of students at SIAS. She graduated last year with a Bachelor's degree in Economics with concentrations in Computer Science and Business Studies.

She is currently placed with the Reserve Bank Innovation Hub in Bengaluru.

[Listen](#) to her journey

## Counsellor Corner

*Access valuable tools and support materials tailored for you by Aparna Raghavan, our in-house mental health counsellor.*



To begin with, watch this interview with our counsellor, on why mental health matters at Krea University.

[View here](#)

## Recommended Reads

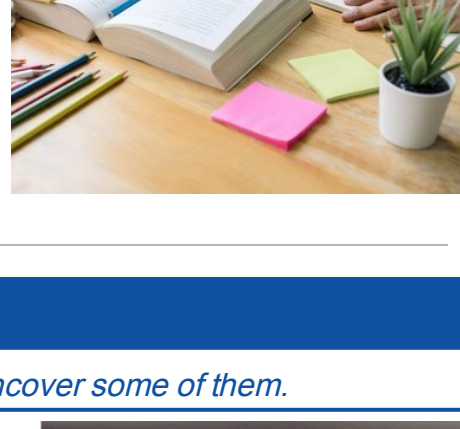
*Explore insightful articles/books curated just for you.*

1. Summary: The search for your students' dream college starts with setting clear educational goals. This piece offers 10 steps to help you choose the right college.

[Read here](#)

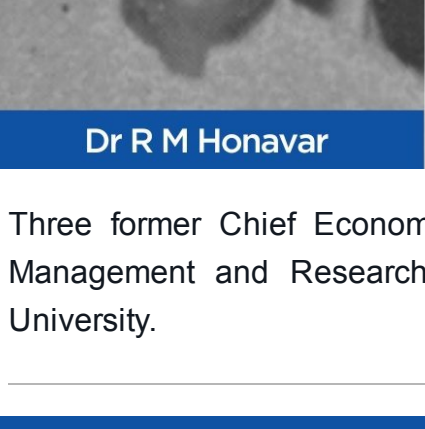
2. Are your students torn between studying in India or abroad? This piece weighs the pros and cons.

[Read here](#)

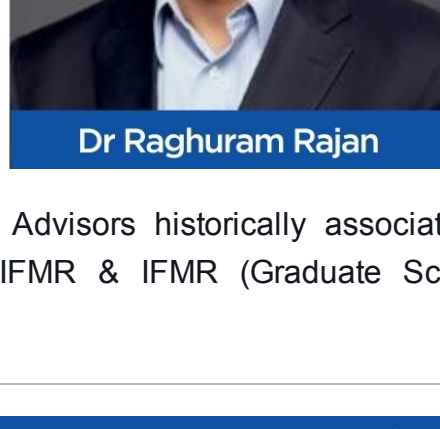


## Krea Trivia

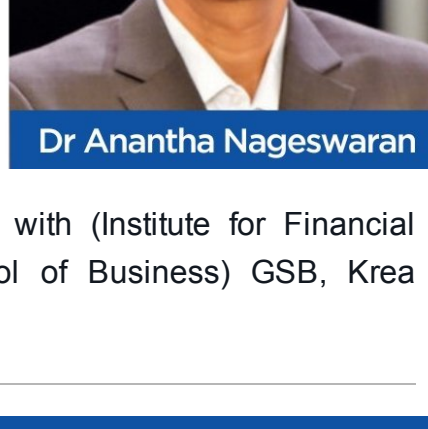
*The Kreaverse is packed with interesting tid-bits. Uncover some of them.*



Dr R M Honavar



Dr Raghuram Rajan



Dr Anantha Nageswaran

Three former Chief Economic Advisors historically associated with (Institute for Financial Management and Research) IFMR & IFMR (Graduate School of Business) GSB, Krea University.

## FAQs or Q&A Section

*Shoot your questions here and we will respond to them in the next edition.*



*Your feedback is essential as we strive to improve and expand. If you have suggestions, ideas, or would like to contribute to the newsletter, please reach out to us at*

[krea.outreach@krea.edu.in](mailto:krea.outreach@krea.edu.in).